



UNEP



# MedOpenSeas project: promoting SPAMIs in the Mediterranean open seas



## Strategic action overview

- To assist the Contracting Parties to promote through the SPAMI system the setting up of a representative network of protected areas in the Mediterranean open seas, including the deep seas
- A process developed in **three** phases:
  - First phase: 2008 – 2009
  - Second phase: 2010 – 2011
  - Third phase: 2012 – 2015

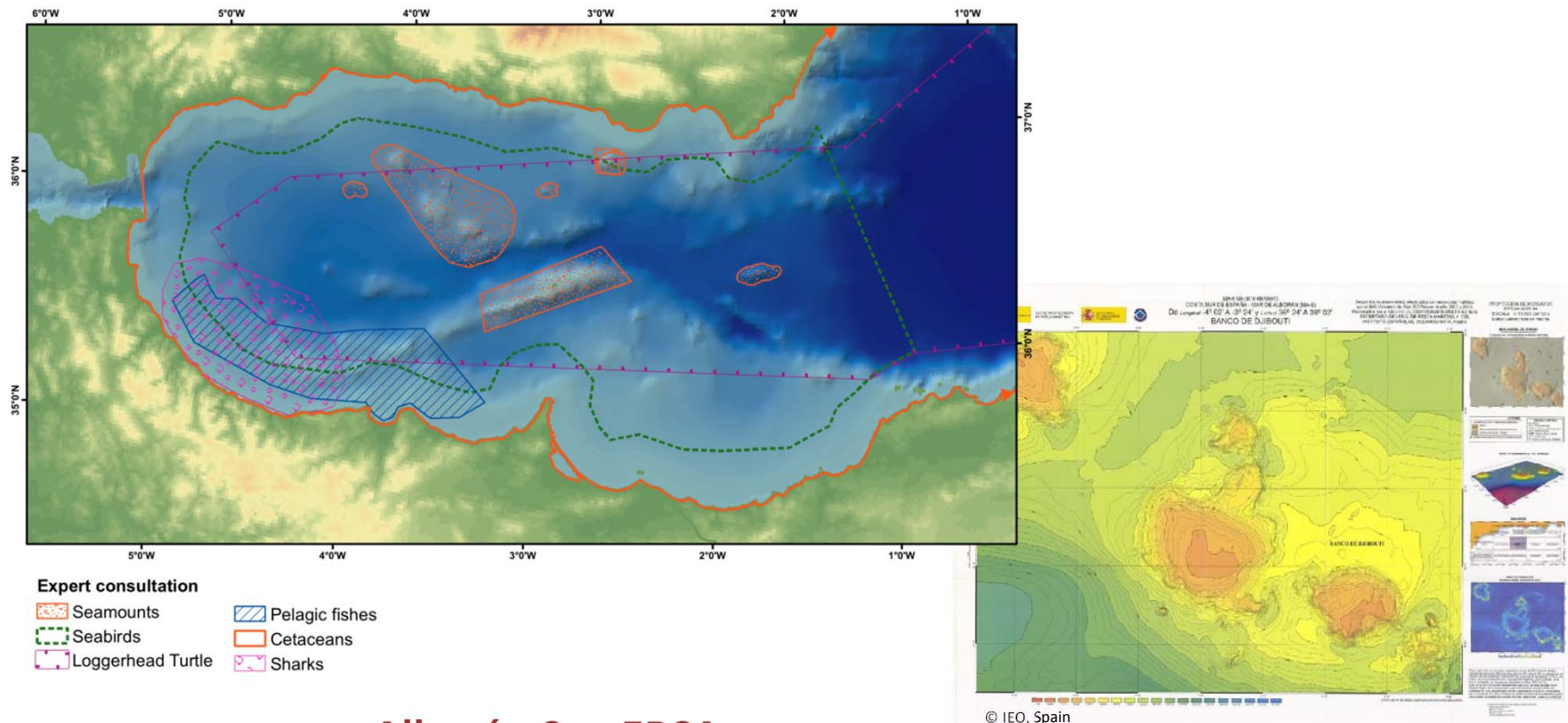






# Establishment of SPAMIs in the Mediterranean open seas, including the deep sea : steps

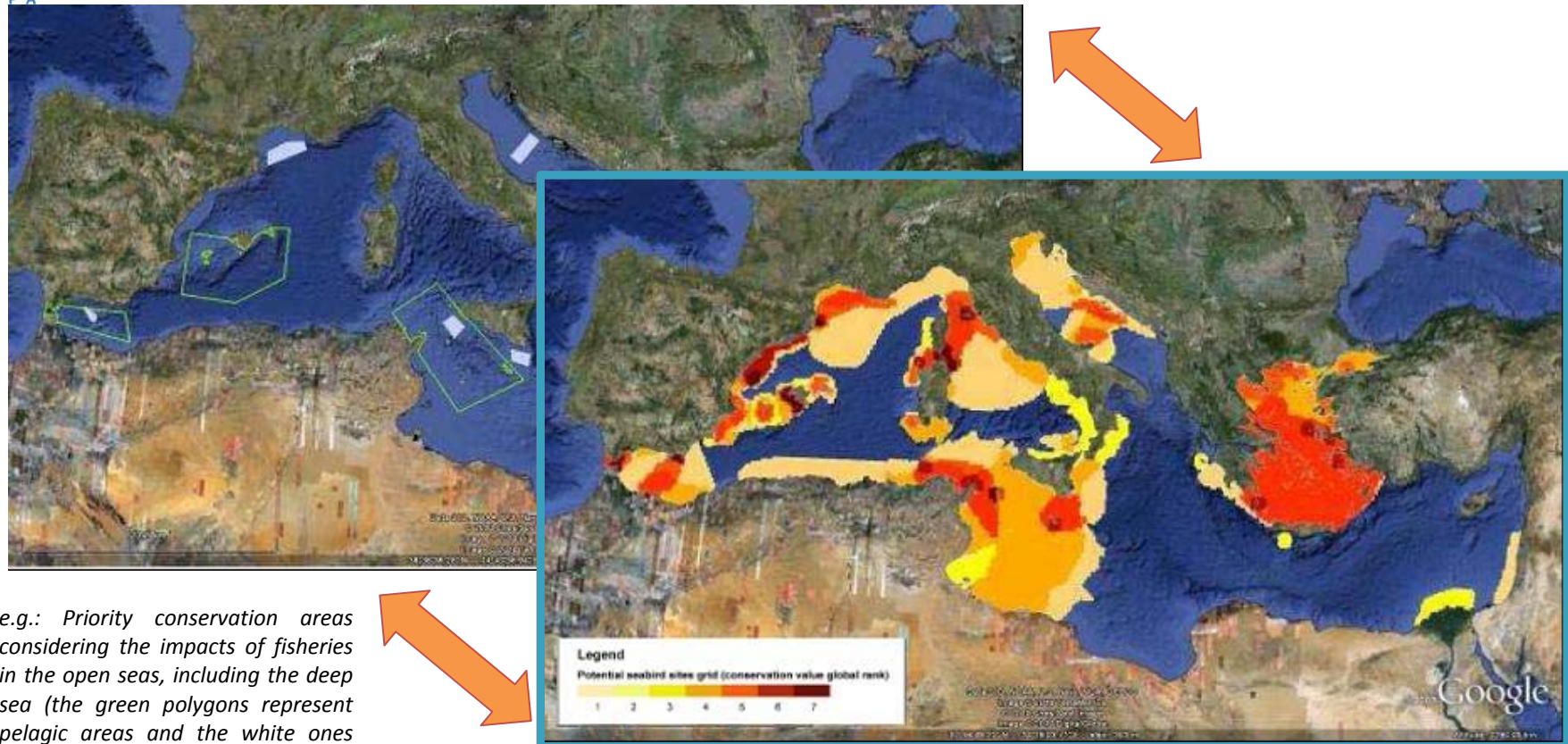
## 2. Identification of 10 marine Ecologically or Biologically Significant Areas in the Mediterranean





# Establishment of SPAMIs in the Mediterranean open seas, including the deep sea : steps

## 3. Identification of priority conservation areas: merging of data



*e.g.: Priority conservation areas considering the impacts of fisheries in the open seas, including the deep sea (the green polygons represent pelagic areas and the white ones demersal areas)*

*e.g.: priority conservation areas for the conservation of sea birds. The degree of priority for conservation is represented on a scale from 1 (the lightest shade) to 7 (the darkest)*



# Establishment of SPAMIs in the Mediterranean open seas, including the deep sea

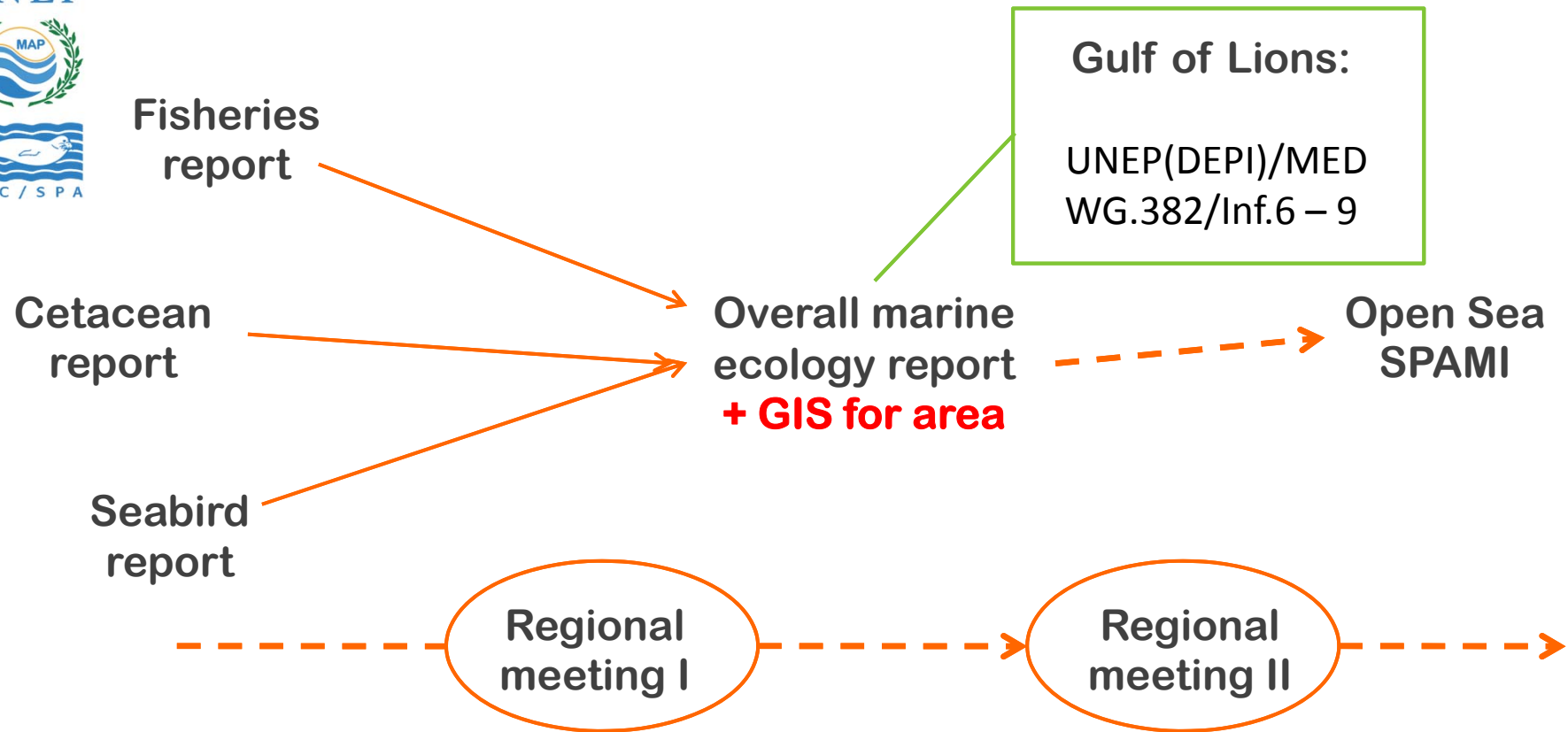
## 4. Identification of priority conservation areas: Retention of 12 areas by the Parties



1: Alborán Seamounts; 2: Southern Balearic; 3: Gulf of Lions shelf and slope; 4: Central Tyrrhenian; 5: Northern Strait of Sicily (including Adventure and nearby banks); 6: Southern Strait of Sicily; 7: Northern and Central Adriatic; 8: Santa Maria di Leuca; 9: Northeastern Ionian; 10: Thracian Sea; 11: Northeastern Levantine Sea and Rhodes Gyre; 12: Nile Delta Region



# Foreseen outputs for each of the priority areas



Download background publications:  
<http://www.rac-spa.org/publications>



## Target areas throughout the project phases

- ✓ **First phase: defining and identifying priority sites**
- ✓ **2<sup>nd</sup> phase: Alboran Sea + Gulf of Lions**
- ✓ **3<sup>rd</sup> phase: Alboran Sea + Adriatic Sea + Sicily**

### **Channel + Tunisian Plateau**

<b>Priority areas addressed during 3<sup>rd</sup> phase</b>	<b>Neighbouring countries</b>
Adriatic Sea	Albania, Bosnia-Herzegovina, Croatia, Italy, Montenegro and Slovenia
Alboran Sea	Algeria, Morocco and Spain
Sicily Channel/Tunisian Plateau	Italy, Libya, Malta and Tunisia



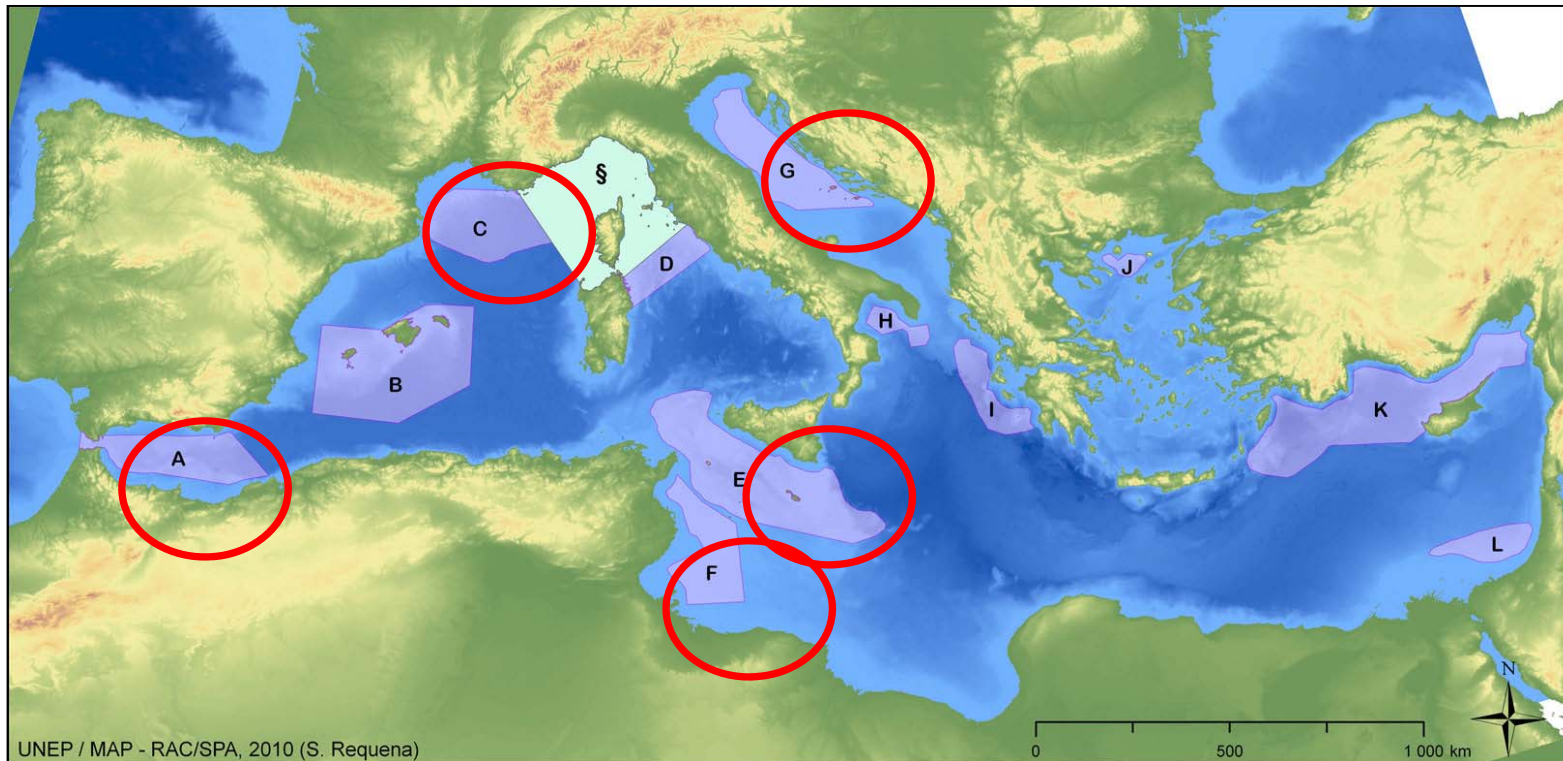


UNEP



## Target areas throughout the project phases

3<sup>rd</sup> phase: Alboran Sea + Adriatic Sea + Sicily Channel +  
Tunisian Plateau



A: Alborán Seamounts; B: Southern Balearic; C: Gulf of Lions shelf and slope; D: Central Tyrrhenian; E: Northern Strait of Sicily (including Adventure and nearby banks); F: Southern Strait of Sicily; G: Northern and Central Adriatic; H: Santa Maria di Leuca; I: Northeastern Ionian; J: Thracian Sea; K: Northeastern Levantine Sea and Rhodes Gyre; L: Nile Delta Region (§: Pelagos Sanctuary declared as SPAMI in 2001)



## Objectives under the 3<sup>rd</sup> phase

### Adriatic Sea, Alboran Sea, Sicily Channel, Tunisian Plateau

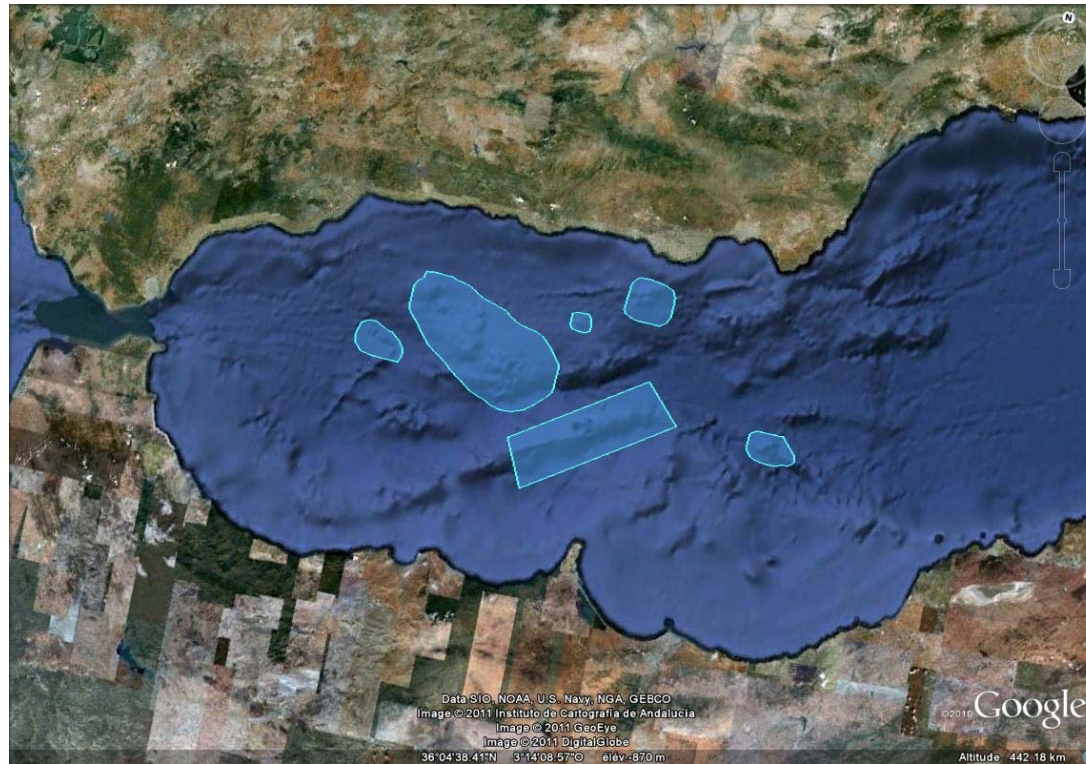
- Identification of **good practices** for developing SPAMIs in the open seas
- Development of a joint strategy with **ACCOBAMS, IUCN and GFCM**, including promotion of oceanographic surveys
- Consultations to facilitate SPAMI proposals in countries showing interest, both on-going (**Alboran Sea**) and starting (**Adriatic Sea, Sicily Channel/Tunisian Plateau**)
- Contributions to other policy processes, e.g. Ecologically or Biologically Significant Areas (**EBSAs**) under the CBD
- **Gulf of Lions**: process continues, but no 3<sup>rd</sup> phase funding



# Alborán open sea area, including the deep seas

## Vulnerable ecosystems identified

↪ Geological features of the seabed (seamounts, mud volcanoes, dries, canyons, hydrothermal vents)



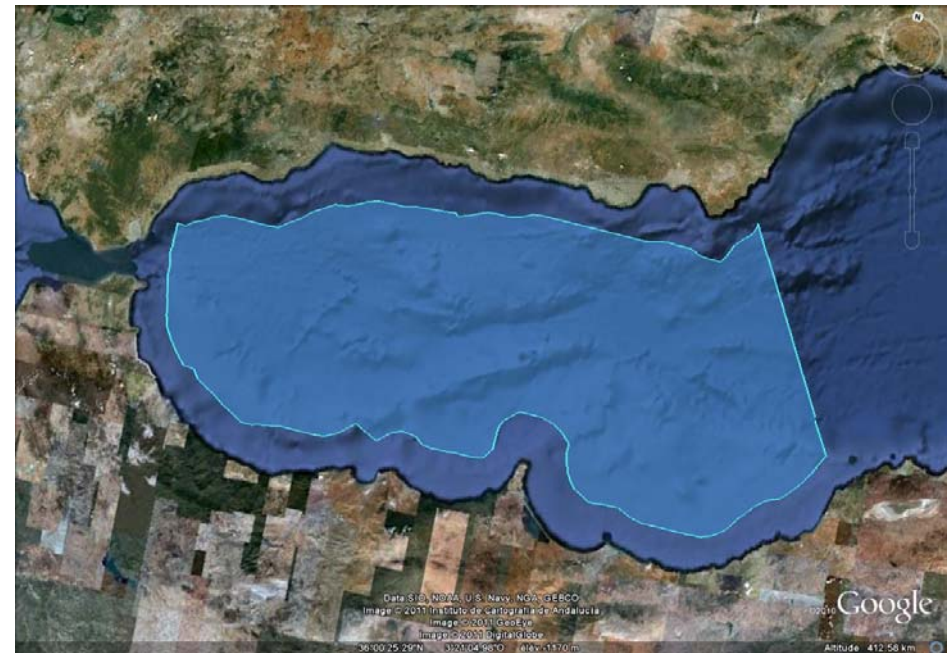
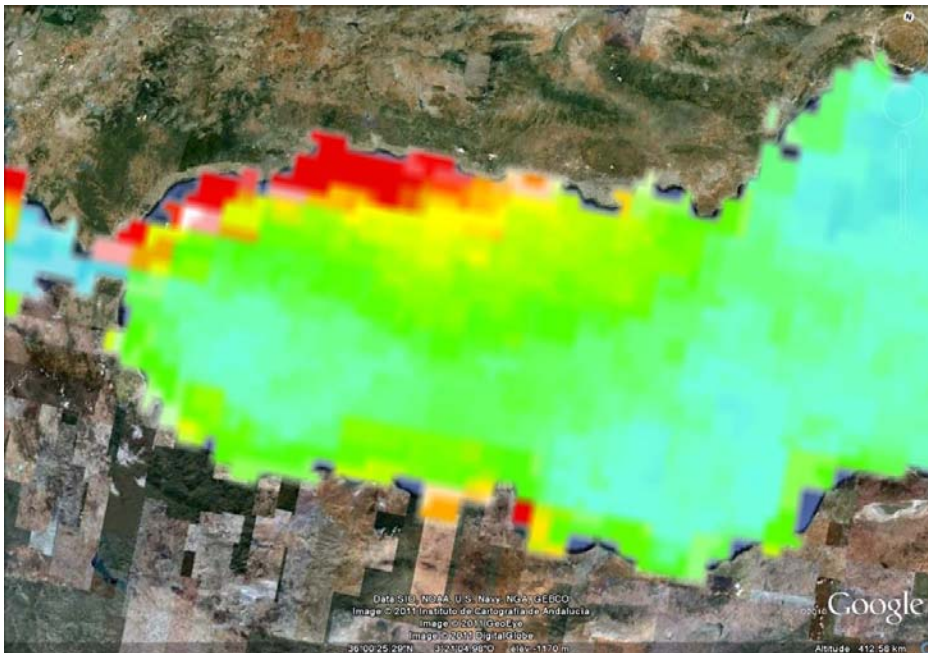




# Alborán open sea area, including the deep seas

## Vulnerable ecosystems identified

 Oceanographic features such as fronts, upwellings





# Spatial online workspace: SeaSketch

New tool for MPA planning and stakeholder participation

MedOpenSeas - Mediterranean Priority Areas for Conserv...  
Joint Management Action of the European Community with UNEP-MAP

seasketch

help Aline Kuhl

Data Layers My Plans Participate

Data Layers Basemap Legend

Search layers by name or keyword X

**More georeferenced biodiversity data needed!**

1. Physical

- 1.1 Bathymetry
- 1.2 Shoreline
- 1.3 Ocean Variables
- 1.4 Undersea features
- 1.5 Sea Surface Temperature

2. Biological

- 2.1 Seabirds Distribution

3. Management

- 3.1 Boundaries
- 3.2 In force
- 3.3 Draft MPAs
- 3.4 Fisheries Management Conservation Areas

4. Threats

- 4.1 Pollution

www.seasketch.org

POWERED BY ESRI





# Sketching and discussion forum

Official launch: February 2013

Users: 143 (SPA Focal Points: 9 out of 35 active)

MedOpenSeas - Mediterranean Priority Areas for Conserv...  
Joint Management Action of the European Community with UNEP-MAP admin

seasketch

help Aline Kühl

Drawing Tools Active.

Data Layers My Plans Participate

Forums / General Forum /

Question: will new sketches be visible by the public?

Aline Kühl 04/05/2013 12:20 PM

We just received the following question: if one creates a sketch (such as the Test MPA one attached) can this be seen by everyone participating in SeaSketch?

Fear not, it will only be seen by yourself and the administrators once you have created your sketch. All your sketches are saved under "My Plans". If you then decide to add one of your sketches to a post in a forum (such as in this example) it can be seen by the group participating in the forum. For this project RAC/SPA is carefully administering access and restricting it to Focal Points and selected experts. None of your sketches will be seen by the public allowing you to do spatial planning in a closed group.

Do post your questions here in the General Forum and send myself (aline.kuehl@rac-spa.org) and/or Daniel Cebrian (daniel.cebrian@rac-spa.org) an email, we will then post the answers here for everyone to benefit.

Kind regards,  
Aline

POWERED BY esri





# Next steps under MedOpenSeas project

- Parties representatives agreement needed on meetings dates

Project objectives	April 2013	May 2013	June 2013	July 2013	Aug. 2013	Sept. 2013	Oct. 2013	Nov. 2013	Dec. 2013	Spring 2014	Summer 2014	Autumn 2014	Winter 2014/2015
1. Participative MPA mapping (using online SeaSketch)	Yellow	Yellow	Yellow	Yellow	Yellow	Yellow	Yellow	Yellow	Yellow	Yellow	Yellow	Yellow	Yellow
2. Alboran Sea: meetings for SPAMI development								Green			Green		
3. Alboran Sea: compilation/review marine ecology report			Yellow	Yellow	Yellow	Yellow	Yellow	Yellow	Yellow	Yellow			
4. Adriatic Sea: meetings for SPAMI development									Green			Green	
5. Adriatic Sea: compilation/review marine ecology report			Yellow	Yellow	Yellow	Yellow	Yellow	Yellow	Yellow	Yellow			
6. Sicily Channel/Tunisian Plateau: meetings								Green				Green	
7. Sicily Channel/Tunisian Plateau: marine ecology report			Yellow	Yellow	Yellow	Yellow	Yellow	Yellow	Yellow	Yellow			
8. Best practise guidelines								Yellow	Yellow	Yellow	Yellow	Yellow	Yellow
9. Partner strategy: ACCOBAMS, GFCM, IUCN	Yellow	Yellow		Yellow						Yellow	Yellow	Yellow	Yellow



UNEP



**Thank you for your attention!**

© M. Foulquié